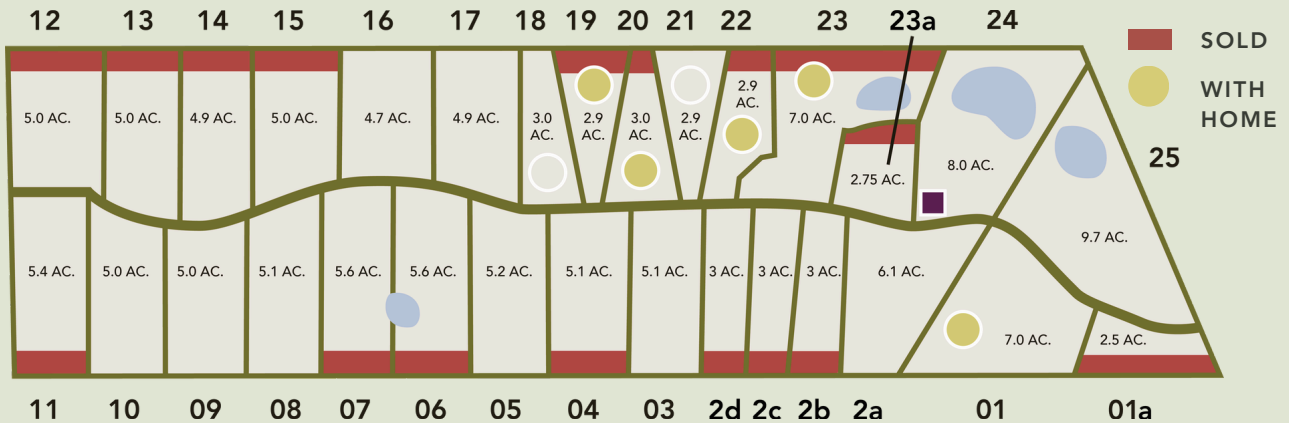




TREE TOPS

# TREE TOPS LAND AVAILABILITY AND PRICING

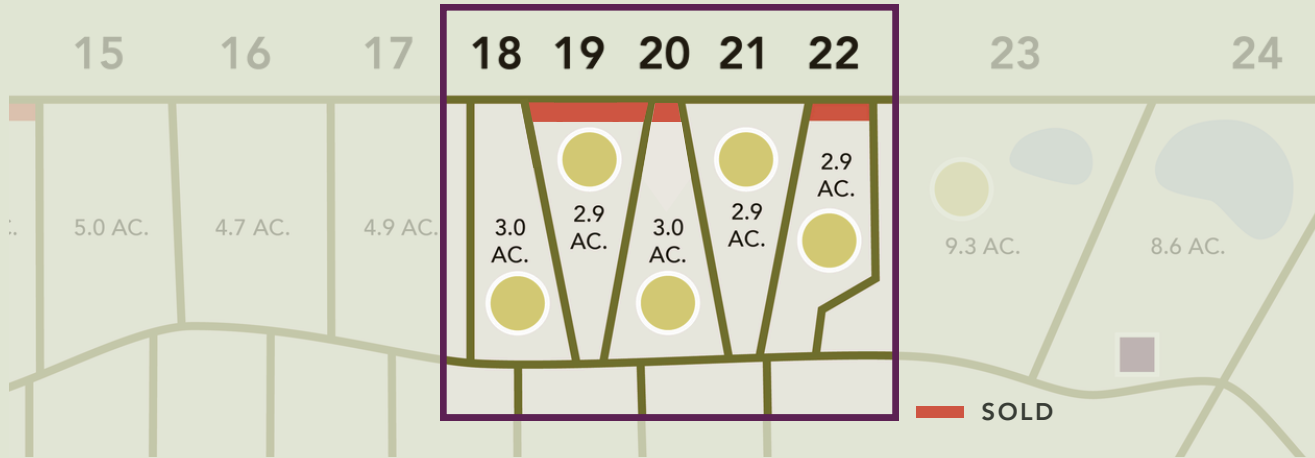
## 1120 W FUCHS RD CARMINE, TX 78932



Lot #	Acreage	Price
1	7.1	\$899,000 *with home
1a	2.5	SOLD
2a	6.1	\$335,000
2b	3.0	SOLD
2c	3.0	SOLD
2d	3.0	SOLD
3	5.1	\$399,000
4	5.1	SOLD
5	5.2	\$349,000
6	5.6	SOLD
7	5.6	SOLD
8	5.1	\$349,000
9	5.0	\$349,000
10	5.0	\$349,000
11	5.4	SOLD
12	5.0	SOLD
13	5.0	SOLD
14	4.9	SOLD
15	5.0	SOLD
16	4.7	\$399,000
17	4.9	\$399,000
18-22	Hacienda Grove (See Reverse)	
23	7.3	SOLD
23a	2.0	SOLD
24	8.0	\$680,000
25	9.7	\$822,885



## HACIENDA GROVE



Introducing Hacienda Grove Round Top, featuring clusters of modern haciendas curated by Starred Sky Development. Every Hacienda Grove community is design-forward and redefines modern living. Carefully considered homesites ensure that each land parcel is low-impact and complements the natural rolling hills, views, and sunlight.

Lot #	Acreage	Home Model	Lot Price
18	3.0	See availability**	\$210,000
19	2.9	Colorado River 3 3	SOLD
20	3.0	Studio Z	SOLD
21	2.9	See availability**	\$210,000
22	2.9	Standard C	SOLD

\*\*If you choose one of our builders and approved home models, a 1,400sf 2/2 house is \$308,000 and a 2,000sq.ft 3/3 house is \$440,000.

Site prep, utility infrastructure, landscape not included.

+The acreage information is deemed reliable but not guaranteed. We recommend buyers confirm the acreage with a professional survey before purchase.

\*For information and pricing for properties that include homes, please contact us for more details.

979.484.7105 | [info@starredskydevelopment.com](mailto:info@starredskydevelopment.com)



COPYRIGHT © 2024, HOUSTON REALTORS INFORMATION SERVICE, INC. ALL INFORMATION PROVIDED IS DEEMED RELIABLE BUT IS NOT GUARANTEED AND SHOULD BE INDEPENDENTLY VERIFIED.